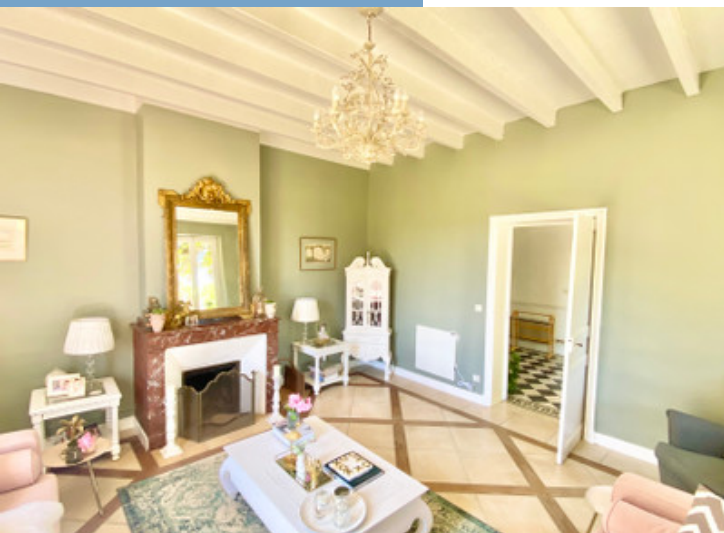
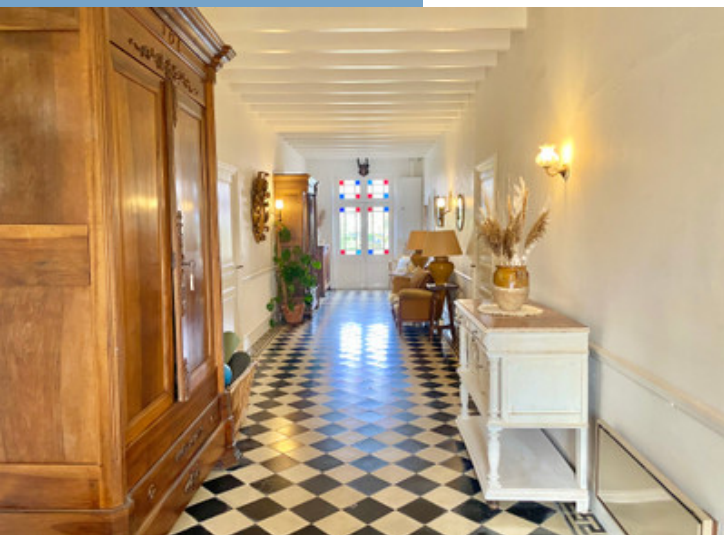




STUNNING 6/8 BED MANOR HOUSE SITUATED IN
OVER 17000M² OF LOVELY GARDENS WITH
PIGEONNIER, OUTBUILDINGS, & POOL

STUNNING 6/8 BED
MANOR HOUSE SITUATED
IN OVER 17000M² OF
LOVELY GARDENS WITH
PIGEONNIER,
OUTBUILDIN...



PROPERTY FACT FILE	
REFERENCE	A25768SNM82
PRICE	€ 750,000 £ 645,413* <small>*agency fees to be paid by the seller</small>
BEDROOM	6
BATHROOM	4
ACCOMMODATION	338 m ²
LAND	17602 m ²
TOWN	Castelferrus
DEPARTMENT	Tarn_et_Garonne
LOCATION	0-2KM to amenities
TYPE	
CONDITION	Good condition
FEATURES	Mains Drains, Electricity on site, Garage
<small>*Price based on current exchange rate which is subject to change</small>	



- Beautifully and stylishly restored throughout
- Lovely village location with a great restaurant
- Huge outbuildings and pigeonier with new roofs
- Excellent road, rail, and air transport links
- Successful high-end wellness retreat business

STUNNING 6/8 BED
MANOR HOUSE
SITUATED IN OVER
17000M² OF LOVELY
GARDENS WITH
PIGEONNIER,
OUTBUILDING
Ref : A25768SNM82

This majestic manor house is situated in the commune of Castelferrus located on the left bank of the Garonne, 6 km from Castelsarrasin and the A61 autoroute, 25 km from Montauban and less than an hour from Toulouse.

Every room in the property has been beautifully and lovingly restored

DESCRIPTIF

PROPERTY DETAILS

GROUND FLOOR -

ENTRANCE HALL (15 x 2.8m) with black and white checkered tiled floor 2 huge armoires, doors with stained glass windows at both ends

SALON (5.15 x 4.75m) with high ceiling, 3 lots of tall double windows, marble fireplace, ceiling beams, garden views

KITCHEN (6 x 5m) Fully equipped with larder cupboard, large fireplace, wood burning stove, 2 sets of double windows overlooking the garden and pool

LAUNDRY ROOM (5.5 x 2m) tiled with large sink and plenty of electrical sockets.

UTILITY ROOM (4.25 x 3.25m) with large armoire

BATHROOM (2 x 3.10m) Partially tiled with bath, washbasin and WC

SHOWER - Fully tiled separate shower room with modern shower

BEDROOM ONE (5.30 x 4.60m) with original tiled floor, large windows with garden views, black marble fireplace, and large armoire.

BEDROOM TWO (5.3 x 5.0m) with white wooden floor, large double French windows, marble fireplace, large armoire, and garden views

BEDROOM THREE (4.80 x 4.60m) Large windows opening over the terrace, marble fireplace, rural views.

FIRST FLOOR

MEZZANINE OFFICE AREA (2.50 x 2.30m) with door to very large undeveloped attic space of around 120m²

SALON (5 x 9m) Stunning modern salon with garden views

BEDROOM FOUR (8 x 4.50m) Superb very large bedroom with huge beams, large armoire.

BEDROOM FIVE (3.25 x 7.70m) Imposing ceiling beams, windows with views over the garden

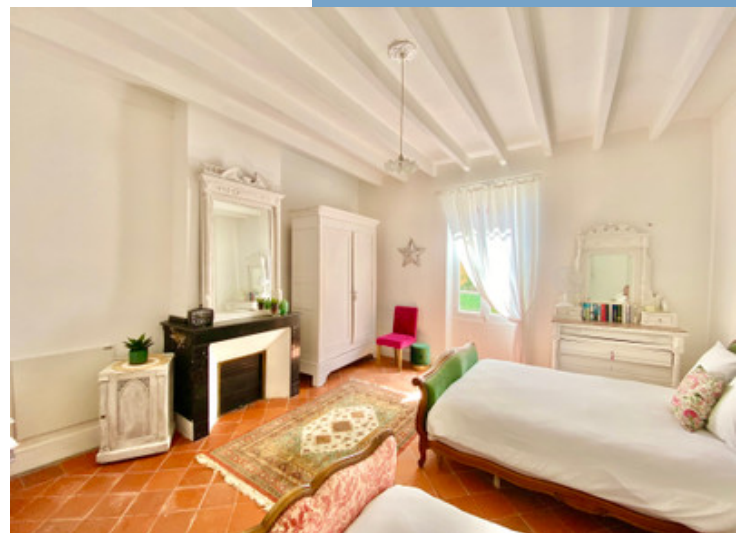
BEDROOM SIX (4.8 x 7.7m) Lovely light room with beautiful beams and views over the garden and pool.

SHOWER ROOM with

More Online :

<https://leggettprestige.com/luxury-property-for-sale/view/A25768SNM82>

COMPLETE FILE AND PHOTO ON REQUEST

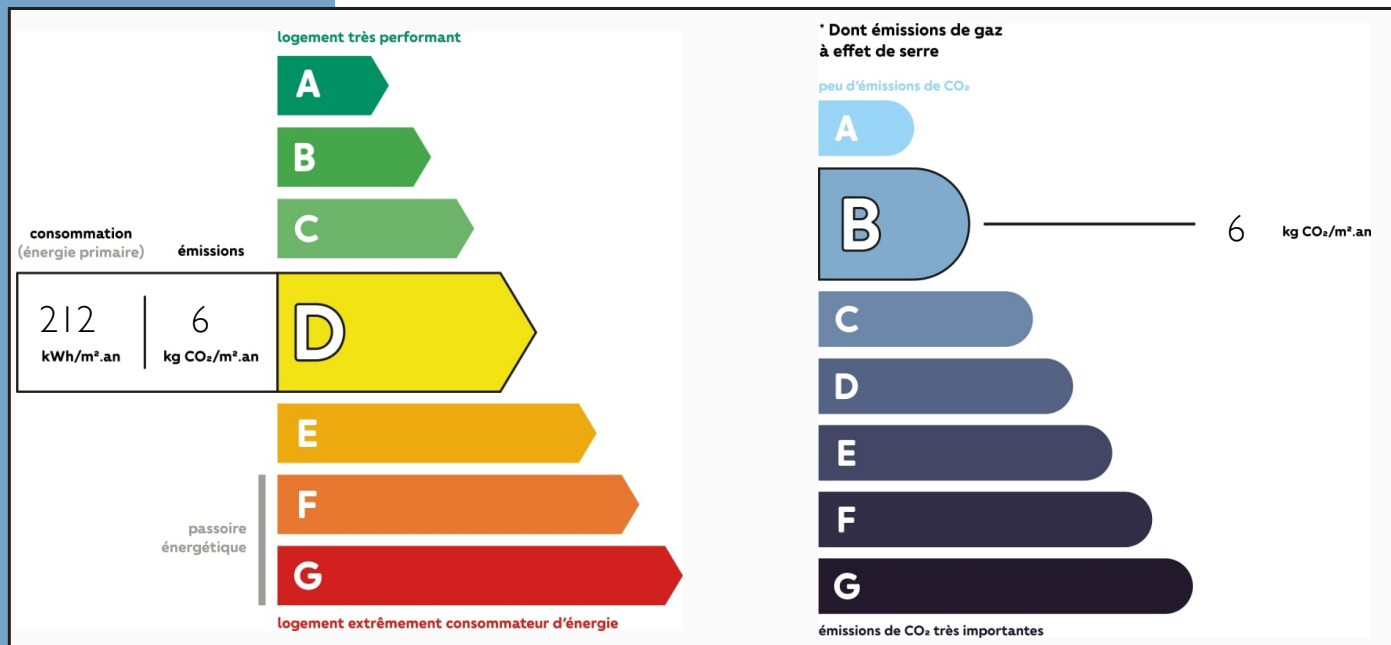


STUNNING 6/8 BED MANOR HOUSE SITUATED IN OVER 17000M² OF LOVELY GARDENS WITH PIGEONNIER OUTBUILDIN...

Ref : A25768SNM82

ENERGIE-DPE

Information about risks to which this property is exposed is available on the Géorisques website : <https://www.georisques.gouv.fr/>



NOTICE

Leggetts, their client and any joint agents give notice that:

1: Quoted prices are subject to fluctuations in exchange rates. Please contact an agent for an up-to-date price. They are not authorised to make or give any representations or warranties in relation to the property either here or elsewhere, either on their own behalf or on behalf of their client or otherwise. They assume no responsibility for any statement that may be made in these particulars. These particulars do not form part of any offer or contract and must not be relied upon as statements or representations of fact. In particular they neither have nor assume responsibility for any statement concerning the financial arrangements or the commercial scheme which may be made available by their clients or others to potential purchasers.

2: Any areas, measurements or distances are approximate. The text, photographs and plans are for guidance only and are not necessarily comprehensive. It should not be assumed that the property has all necessary planning, building regulation or other consents and Leggetts have not tested any services, equipment or facilities. Purchasers must satisfy themselves by inspection or otherwise.

3: These particulars were prepared from preliminary plans and specifications before the completion of the properties and are intended only as a guide. They may have been changed during construction and final finishes could vary. Prospective purchasers should not rely on this information but must get their solicitor to check the plans and specification attached to their contract.

CONTACT

Réf : A25768SNM82
FILE COMPLETE
AND PHOTOS
ON REQUEST

LEGGETT
IMMOBILIER INTERNATIONAL

Téléphone : +33 553 608 488
E-mail: prestige@leggett.fr

LEGGETT IMMOBILIER, 42 ROUTE DE RIBERAC, 24340 LA ROCHEBEAUCOURT, FRANCE
UK Freephone: 08700115151 telephone: +33 553 608 488 E-mail: prestige@leggett.fr