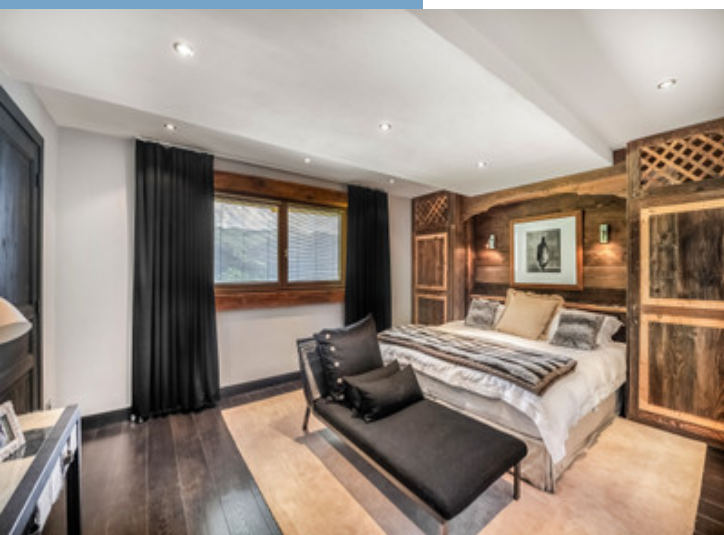




## BEAUTIFUL 5 ENSUITE BEDROOM, LUXURY CHALET FOR SALE IN COURCHEVEL VILLAGE NEXT TO THE SKI PISTE



BEAUTIFUL 5 ENSUITE  
BEDROOM, LUXURY  
CHALET FOR SALE IN  
COURCHEVEL VILLAGE  
NEXT TO THE SKI PISTE...



| PROPERTY FACT FILE  |   |
|---|---|
| REFERENCE   | A25982SM73  |
| PRICE   | € 3,999,000<br>£ 3,441,339*<br><small>*agency fees to be paid by the seller</small> |
| BEDROOM   | 5   |
| BATHROOM  | 5   |
| ACCOMMODATION   | 252 m <sup>2</sup>  |
| LAND  | 971 m <sup>2</sup>  |
| TOWN  | Courchevel  |
| DEPARTMENT  | Savoie  |
| LOCATION  | 0-2KM to amenities  |
| TYPE  | Maison de Vacances, Family Home   |
| CONDITION   | Excellent condition   |
| FEATURES  | Mains Drains, Private parking, Sauna  |
| <small>*Price based on current exchange rate which is subject to change</small> |   |



- Luxury ski in/ski out chalet, sold fully furnished
- Fireplace at the heart of an open plan living area
- 5 ensuite bedrooms
- Additional ski room, hammam, massage room and gym
- Panoramic mountain views

BEAUTIFUL 5 ENSUITE  
BEDROOM, LUXURY  
CHALET FOR SALE IN  
COURCHEVEL VILLAGE  
NEXT TO THE SKI PISTE...

Ref : A25982SM73

A fantastic opportunity to buy this stunning, luxurious chalet right by the ski pistes in Courchevel Village.

Beautifully presented, this chalet is being sold fully furnished, allowing for an easy transition into your new ski property

The property consists of

## DESCRIPTIF

This superb chalet in Courchevel is beautifully finished and being sold fully furnished with its quality fixtures, fittings and furniture including for eg cashmere curtains.

The chalet comprises:

Level -1

Gym and hammam: 41.60m<sup>2</sup>

Massage room: 7.36m<sup>2</sup>

storage room: 9.92

Technical room: 9.92

Level 0:

Entrance: 12.92m<sup>2</sup>

Ski room: 10.55m<sup>2</sup>

Bedroom 1: 13.9m<sup>2</sup>, WC 1.6m<sup>2</sup>, shower room 3.08m<sup>2</sup>

Bedroom 2: 18.1m<sup>2</sup>, WC 1.9m<sup>2</sup>, bathroom 6.3m<sup>2</sup>

Hall: 1.84

Level 1:

Bedroom 3: 12.16m<sup>2</sup>, bathroom 6m<sup>2</sup>

Bedroom 4: (Master suite) : 31.4m<sup>2</sup>

Bedroom 5: 13m<sup>2</sup>, bathroom 4.96m<sup>2</sup>

Balcony 16.4m<sup>2</sup>

Level 2:

Kitchen, living and dining space 74.38m<sup>2</sup> (51.8m<sup>2</sup> loi carrez)

Balcony x 2: 13.28m<sup>2</sup>

Outdoor private parking

The chalet is a total of 277.22m<sup>2</sup> with 252,85 loi carrez.

Just metres from the piste this chalet is in a fantastic position for skiing in Courchevel and the 600kms of pistes in the 3 valleys.

Travel:

Courchevel altiport and helipad : 15 mins

Moutiers train station 30 mins

Geneva airport 2 hours

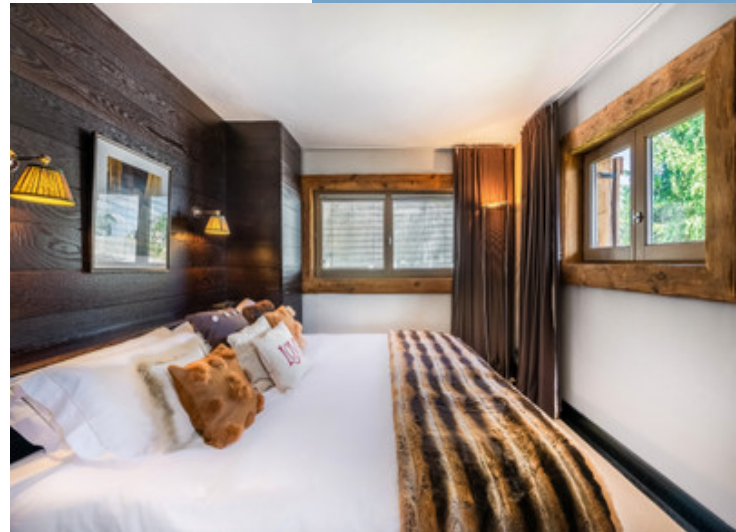
Lyon airport 2 hours

Chambery airport 1 hr 15

More Online :

<https://leggettprestige.com/luxury-property-for-sale/view/A25982SM73>

COMPLETE FILE AND PHOTO ON REQUEST



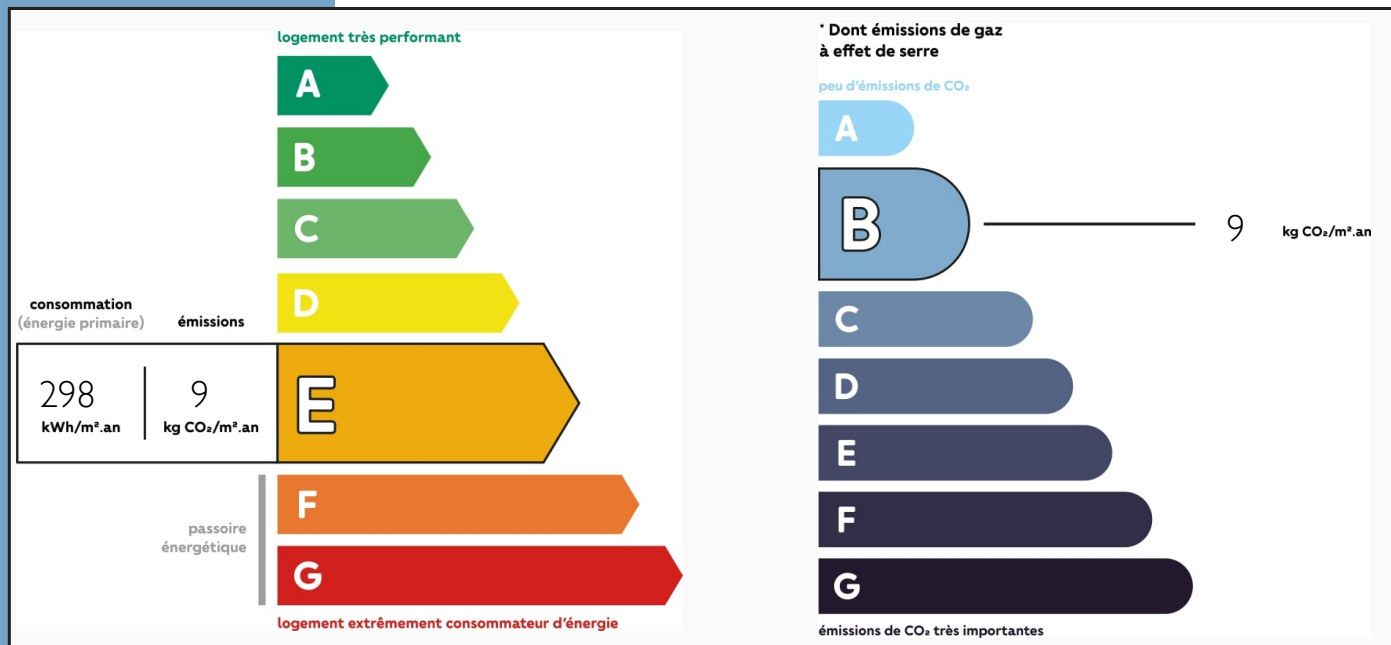


BEAUTIFUL 5 ENSUITE  
BEDROOM, LUXURY CHALET  
FOR SALE IN COURCHEVEL  
VILLAGE NEXT TO THE SKI  
PISTE...

Ref : A25982SM73

## ENERGIE-DPE

Information about risks to which this property is exposed is available on the Géorisques website :  
<https://www.georisques.gouv.fr/>



## NOTICE

Leggetts, their client and any joint agents give notice that:

I: Quoted prices are subject to fluctuations in exchange rates. Please contact an agent for an up-to-date price. They are not authorised to make or give any representations or warranties in relation to the property either here or elsewhere, either on their own behalf or on behalf of their client or otherwise. They assume no responsibility for any statement that may be made in these particulars. These particulars do not form part of any offer or contract and must not be relied upon as statements or representations of fact. In particular they neither have nor assume responsibility for any statement concerning the financial arrangements or the commercial scheme which may be made available by their clients or others to potential purchasers.

2: Any areas, measurements or distances are approximate. The text, photographs and plans are for guidance only and are not necessarily comprehensive. It should not be assumed that the property has all necessary planning, building regulation or other consents and Leggetts have not tested any services, equipment or facilities. Purchasers must satisfy themselves by inspection or otherwise.

3: These particulars were prepared from preliminary plans and specifications before the completion of the properties and are intended only as a guide. They may have been changed during construction and final finishes could vary. Prospective purchasers should not rely on this information but must get their solicitor to check the plans and specification attached to their contract.

## CONTACT

Réf : A25982SM73  
FILE COMPLETE  
AND PHOTOS  
ON REQUEST

**LEGGETT**  
IMMOBILIER INTERNATIONAL

Téléphone : +33 553 608 488  
E-mail: [prestige@leggett.fr](mailto:prestige@leggett.fr)

LEGGETT IMMOBILIER, 42 ROUTE DE RIBERAC, 24340 LA ROCHEBEAUCOURT, FRANCE  
UK Freephone: 08700115151 telephone: +33 553 608 488 E-mail: [prestige@leggett.fr](mailto:prestige@leggett.fr)