



## EXQUISITE EQUESTRIAN HOMESTEAD SET IN 20 HECTARES WITH 12 LOOSE BOXES, BARN AND LAKE NEAR BRANTÔME



EXQUISITE EQUESTRIAN  
HOMESTEAD SET IN 20  
HECTARES WITH 12  
LOOSE BOXES, BARN AND  
LAKE NEAR BRANTÔME...



PROPERTY FACT FILE	
REFERENCE	A08910
PRICE	€ 878,000 £ 0* *agency fees included: 0 % TTC to be paid by the buyer (850 000 EUR hors honoraires)
BEDROOM	8
BATHROOM	5
ACCOMMODATION	590 m <sup>2</sup>
LAND	201422 m <sup>2</sup>
TOWN	Brantôme en Périgord
DEPARTMENT	
LOCATION	Isolated
TYPE	Maison de Campagne
CONDITION	Habitable
FEATURES	Swimming Pool, Other Drainage, Lake
*Price based on current exchange rate which is subject to change	



- Equestrian property
- No immediate neighbours
- Fully fenced paddocks
- 12 extra large stables
- Swimming pool

EXQUISITE EQUESTRIAN  
HOMESTEAD SET IN 20  
HECTARES WITH 12  
LOOSE BOXES, BARN  
AND LAKE NEAR  
BRANTÔME...

Ref : A08910

This property really must be seen to be appreciated. The farmhouse has been entirely renovated to a high standard with 5 bedrooms and 3 bathrooms and a fabulous 60m<sup>2</sup> kitchen. The attached cottage has a further 3 bedrooms and 2 bathrooms and is ideal for rental. The buildings sit in 20 hectares with numerous paddocks all with water

## DESCRIPTIF

Main house.

Ground floor.

Entrance 14m<sup>2</sup> tiled entrance hall with cloakroom (toilet and basin, additional 6m<sup>2</sup>)

Kitchen 63m<sup>2</sup> dining kitchen with fully fitted units. There is a multifuel ray burn as well as an electric range cooker with gas hob. Large island with induction hob. Dual aspect giving plenty of light.

Living room 53m<sup>2</sup> with log burning stove.

Dining room 33m<sup>2</sup> tiled floor and dual aspect.

Lobby 9m<sup>2</sup> giving access to the back kitchen

Back kitchen/boot room 20m<sup>2</sup> great storage space with sink.

Upstairs

Bedroom 1 Master suite; 44m<sup>2</sup> bedroom with exposed beams.

Dressing room 7.5m<sup>2</sup>. Bathroom 8.5m<sup>2</sup> with bath, separate shower, toilet and basin. Also an attached room of 7.5m<sup>2</sup> ideal as a nursery or second dressing room

Bedroom 2 16.5 m<sup>2</sup> with Juliette balcony and en-suite shower room 7m<sup>2</sup> with shower, basin and toilet.

Bedroom 3 16m<sup>2</sup>

Bedroom 4 20m<sup>2</sup>

Bedroom 5 24m<sup>2</sup> with en suite shower room 9m<sup>2</sup> with shower, basin and toilet.

Landing 32m<sup>2</sup>

The entire main house has 2 underfloor heating circuits connected to the oil-fired boiler. There are additional radiators which are connected to the Rayburn.

Cottage

Kitchen 22m<sup>2</sup> with fitted units, electric range cooker with gas hob and extractor. Door to terrace.

Living room 24m<sup>2</sup> with fireplace and log burner.

Dining room 36m<sup>2</sup>

Office 13m<sup>2</sup>. This room connects the main house to the cottage

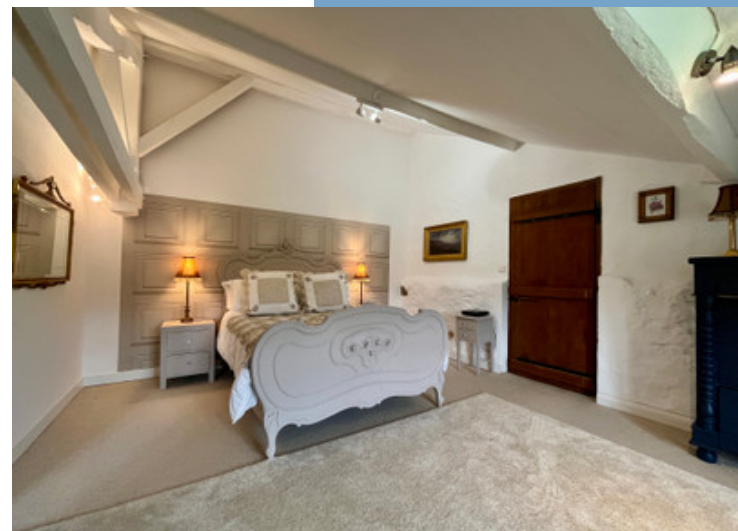
Boiler room 15m<sup>2</sup>

Upstairs

More Online :

<https://leggettprestige.com/luxury-property-for-sale/view/A08910>

COMPLETE FILE AND PHOTO ON REQUEST



EXQUISITE EQUESTRIAN  
HOMESTEAD SET IN 20  
HECTARES WITH 12 LOOSE  
BOXES, BARN AND LAKE  
NEAR BRANTÔME...

Ref : A08910

## ENERGIE-DPE

Information about risks to which this property is exposed is available on the Géorisques website :  
<https://www.georisques.gouv.fr/>

DPE blank.

## NOTICE

Leggetts, their client and any joint agents give notice that:

1: Quoted prices are subject to fluctuations in exchange rates. Please contact an agent for an up-to-date price. They are not authorised to make or give any representations or warranties in relation to the property either here or elsewhere, either on their own behalf or on behalf of their client or otherwise. They assume no responsibility for any statement that may be made in these particulars. These particulars do not form part of any offer or contract and must not be relied upon as statements or representations of fact. In particular they neither have nor assume responsibility for any statement concerning the financial arrangements or the commercial scheme which may be made available by their clients or others to potential purchasers.

2: Any areas, measurements or distances are approximate. The text, photographs and plans are for guidance only and are not necessarily comprehensive. It should not be assumed that the property has all necessary planning, building regulation or other consents and Leggetts have not tested any services, equipment or facilities. Purchasers must satisfy themselves by inspection or otherwise.

3: These particulars were prepared from preliminary plans and specifications before the completion of the properties and are intended only as a guide. They may have been changed during construction and final finishes could vary. Prospective purchasers should not rely on this information but must get their solicitor to check the plans and specification attached to their contract.

## CONTACT

Réf :A08910  
FILE COMPLETE  
AND PHOTOS  
ON REQUEST

**LEGGETT**  
IMMOBILIER INTERNATIONAL

Téléphone : +33 553 608 488  
E-mail: [prestige@leggett.fr](mailto:prestige@leggett.fr)

LEGGETT IMMOBILIER, 42 ROUTE DE RIBERAC, 24340 LA ROCHEBEAUCOURT, FRANCE  
UK Freephone: 08700115151 telephone: +33 553 608 488 E-mail: [prestige@leggett.fr](mailto:prestige@leggett.fr)